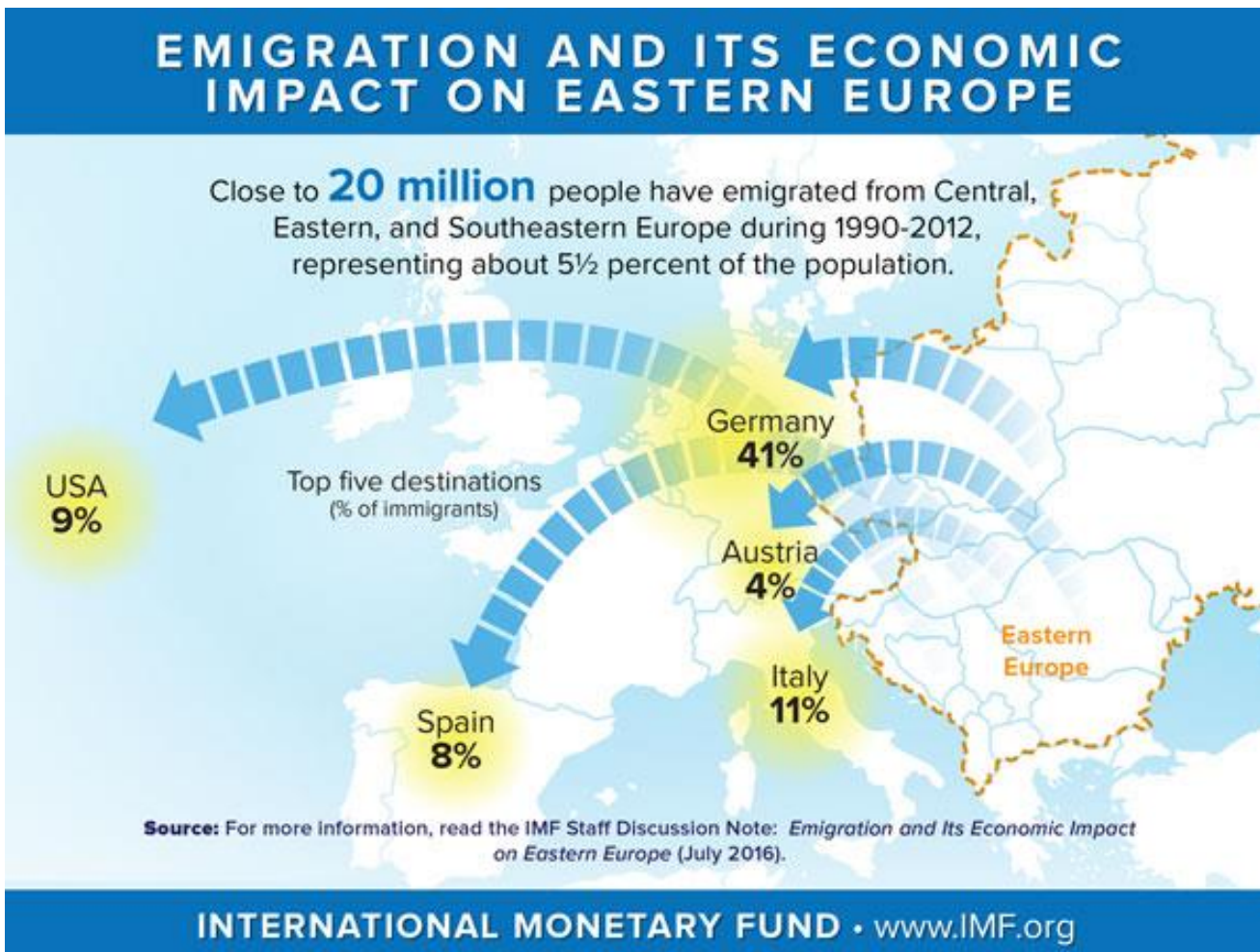


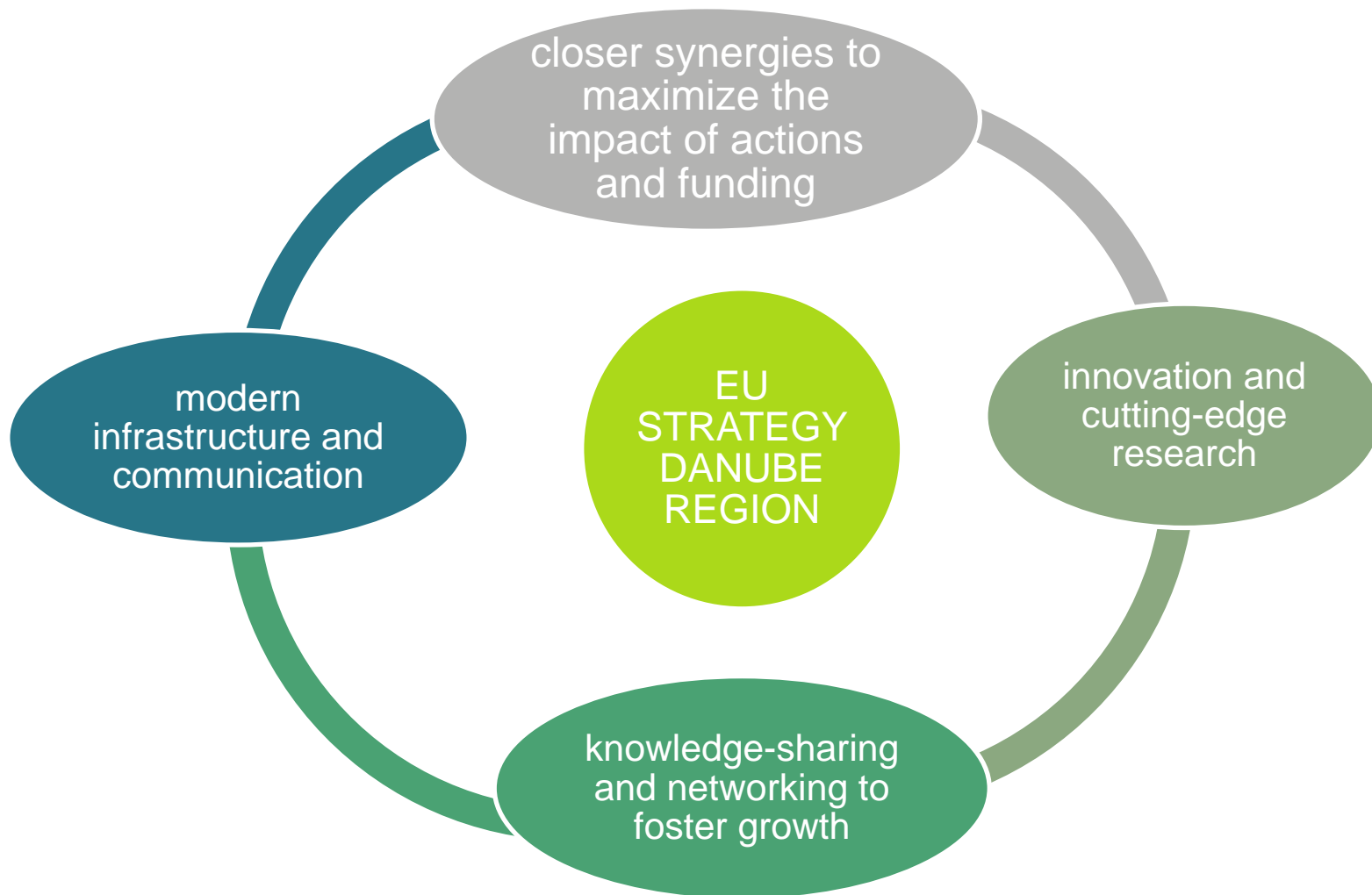
Business environment - Policy context, incentives barriers

Strengthening the regional economic development

- Goal: demonstrate that linking education to employment contributes to the strengthening of the regional economic development
- Target groups:
 - politics/administration: decision-makers at national, regional and local level
 - education: higher educational institutions: universities, universities of applied sciences, Colleges, higher education institution staff
 - business: business associations, industrial associations, Chambers of Commerce and Industry, companies, employers, entrepreneurs



Business environment



Business related challenges and opportunities



Best practices 1/4

- Encouraging the further development of Higher Education Acts
 - formation of practical skills in students
 - strengthening the connection between business and educational institutions
 - assessment of the training provided by various higher schools based
- Law related best practices

Best practices 2/4

- **Fostering the creation of more professional-oriented study programmes**
 - Specialised organisations
 - Dedicated study programmes
 - Specialised e-learning courses

Best practices 3/4

- Enhancing professional training (train the trainers) in companies
 - With respect to R&D, innovation, etc
 - With respect to new teaching channels
 - Vocational internships

Best practices 4/4

- Strengthening the regional economic development
 - national S3 strategies
 - educational programs in accordance with the needs of specific economy sectors and in cooperation with various stakeholders
 - Sustainability?

What can be done

- Benefit through better connections between innovation and business supporting institutions
- Clusters and links between centres of excellence, binding them into existing education and research networks



Thanks for your attention!



ELC 4 - Strengthening the regional economic development